

Westbrook Apartments, a vibrant, modern community, is situated on 45 acres of land in Gary, Indiana. Blanketing several blocks of Gary's West Side. Westbrook is one of the most distinctive and historical neighborhoods in the city.

This 500 unit apartment complex consists of attractive one bedroom and two bedroom townhouse apartments. Less than a half hour from Chicago, Illinois and minutes from Merrillville, Indiana. Only blocks from local hospitals, schools, shopping centers, public transportation and major highways. Westbrook Apartment living is affordable and convenient, with many opportunities to develop new friendships and share activities.

Westbrook Apartments also offers you tree-lined streets, ample parking and a front yard for your children to enjoy.

Westbrook is an established apartment complex that offers residents comfort, enjoyment, and affordability.

We extend to you, an open invitation to visit us anytime.

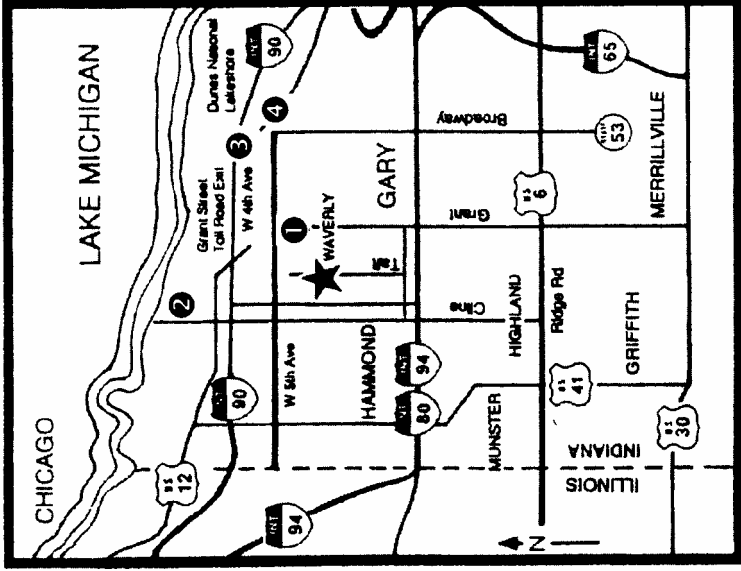
Office Hours

Monday - Friday

8:30 am to 5:00 pm

Saturday and Sunday

Closed



★ Westbrook Apartments

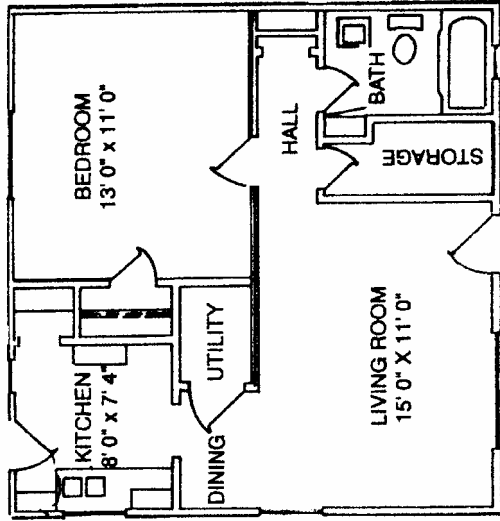
- ① Methodist Hospital
- ② Adam Benjamin, Jr. Metro Center
- ③ Trump/Majestic Star Casinos & Hotel
- ④ Railcat Stadium



*Where The Living Is
Convenient and Affordable*

2301 Waverly Drive
Gary, IN 46404
(219) 949-7917
Fax (219) 949-7930

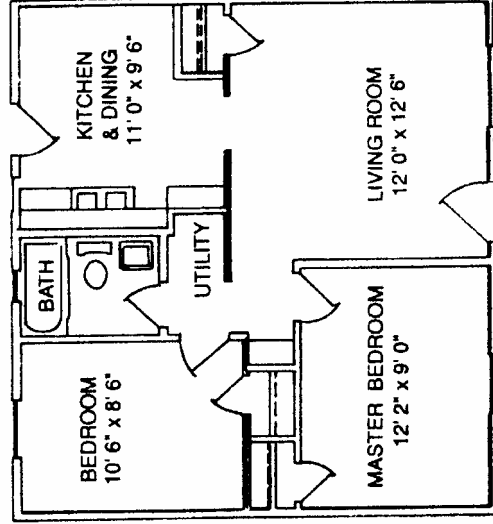
WESTBROOK APARTMENTS' FLOOR PLANS



ONE BEDROOM UNIT 1-STORY - 500 Sq. Ft. (approx.)

APARTMENT AMENITIES

- Private Front and Rear Entrances
- Ceiling Fans With Lights
- Carpeting
- 24 Hour Emergency Maintenance
- Private Garbage Removal
- Near Casinos
- Monitored Intrusion Alarm Systems
- 10% Discount to Seniors and Law Enforcement



TWO BEDROOM UNIT 1-STORY - 500 Sq. Ft. (approx.)

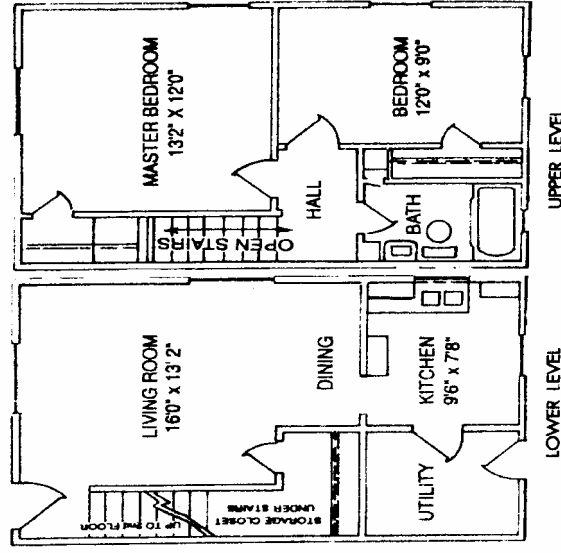
EASY ACCESSIBILITY

Within 1 mile of: 1-65, 1-80/94, 1-90

- Private & Public Schools
- Brunswick Elementary
- Vohr Elementary
- Westside High School
- Holy Angels
- The Commons on 20 Shopping Center
- Laundromat
- Local Hospital (six blocks)
 - Methodist
- Adam Benjamin, Jr. Metro Center
 - Gary Public Transportation Corp.
 - Greyhound
 - South Shore Commuter Train

WE WILL NEED

- Drivers License or State I. D. Card
- Paycheck Stubs (2 most recent)
- Current W2's
- \$35.00 Application Fee
- Security Deposit Required



TWO BEDROOM UNIT TOWNHOUSE 750 Sq. Ft. (approx.)